



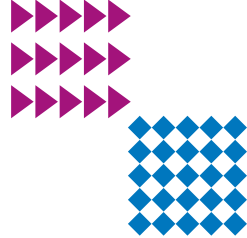
BASW

The professional association for
social work and social workers

Working independently?

Access a choice of enhanced BASW membership packages for self-employed social workers.

BASW. By your side, every step of the way



BASW membership for independent social workers

Sign up to standard BASW membership and opt into one of our two enhanced independent membership packages designed for independent social workers.

Independent Basic package

Professional indemnity insurance

All our membership packages include £5 million professional indemnity cover.

Get listed in our specialist Independents Directory to attract work

Ranked no. 1 on Google, BASW's Independents Directory is a public resource for clients to find the right self-employed social work professionals.

Make professional links with other social workers

Belong to a UK wide network of 4000+ independent social workers or connect in your area. Our networks bring together self-employed social work professionals, practice assessors, trainers and educators.

Connect online

Join the conversation in the BASW Independents private Facebook discussion group and the BASW Independents LinkedIn group.

Show your professional status

Download and use our recognised BASW Independent Social Work logo to promote your work and professional status.



Access CPD and professional resources

Sign-up to free and discounted events to meet your CPD regulatory requirements and keep ahead of updates in your sector.

Join now basw.co.uk/membership



Independent Plus package

Receive BASW updates for Independent members

Hear the latest updates and resources for independent social workers.

Apply the code of ethics for Independent Social Workers to your work

The Code of Ethics for Social Work for Independents outlines the principles of running a business, employing others and practicing independently.

@ibasw email address

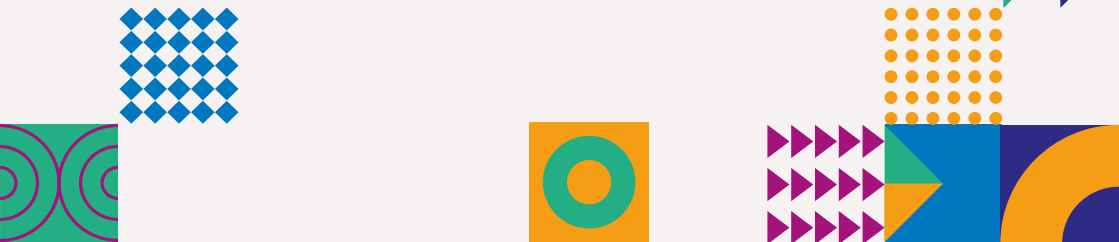
Get an @ibasw email address to use as your own and enhance your professional status.

Enhanced insurance cover

£5 million public liability insurance cover designed for self-employed social work professionals in addition to £5 million professional indemnity insurance.

Secure messaging service to send encrypted messages

Protect your client and business data through our secure BASW branded email messaging service.



Working as an agency social worker?



Social Work **Employment Services**

Gain exclusive access to a fully compliant ethical umbrella company. **Social Work Employment Services** is the UK's only not-for-profit social work umbrella company providing PAYE, payroll and employment services to independent, professional agency social workers and employment agencies.

Social Work Employment Services works in partnership with the BASW, donating all its surplus back into BASW to invest in its membership services and social work.

Join today at
basw.co.uk/membership

Scan the QR code below
to start your journey

