



SASW

The professional association for
social work and social workers

Independent Review of Adult Social Care (Feeley) Report

Alison Bavidge
National Director
SASW
March 2021

My input today

Overview of the report

Areas of recommendations

National Care Service Structure

Issues with the Review

- Membership
- Adult social care

Independent Review September 2020 – January 2021

- Engagement phase to November 2020
- Evidence and written submissions
- Interviews with people experienced in care services and other stakeholders
- Report published 3 February 2021
- 53 recommendations



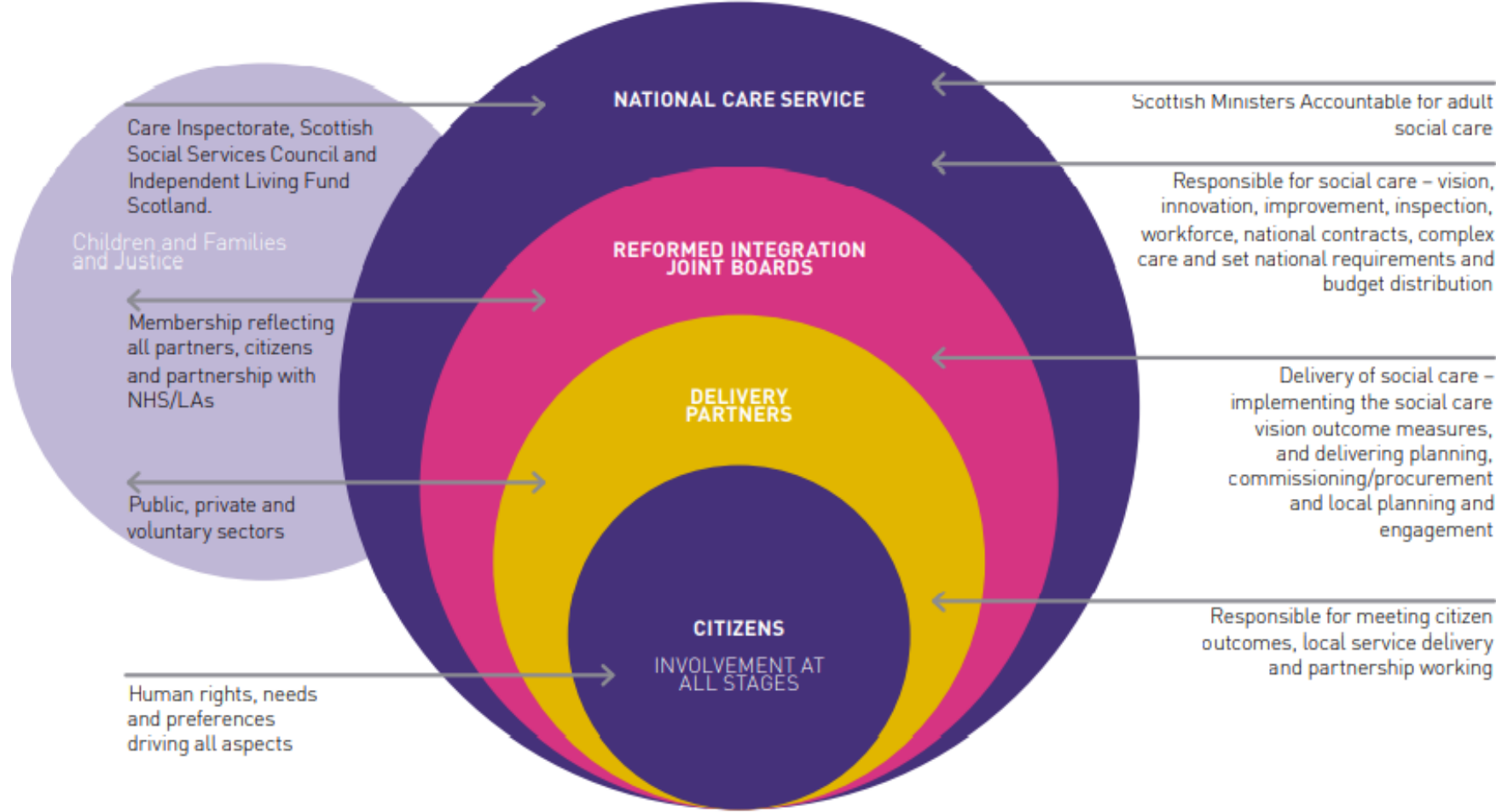
IRASC recommendations

- **Human rights-based approach**
- **Support for unpaid carers**
- **National Care Service (NCS)**
- **National Improvement Programme**
- **Commissioning and models of care**
- **Fair work**
- **Finance**

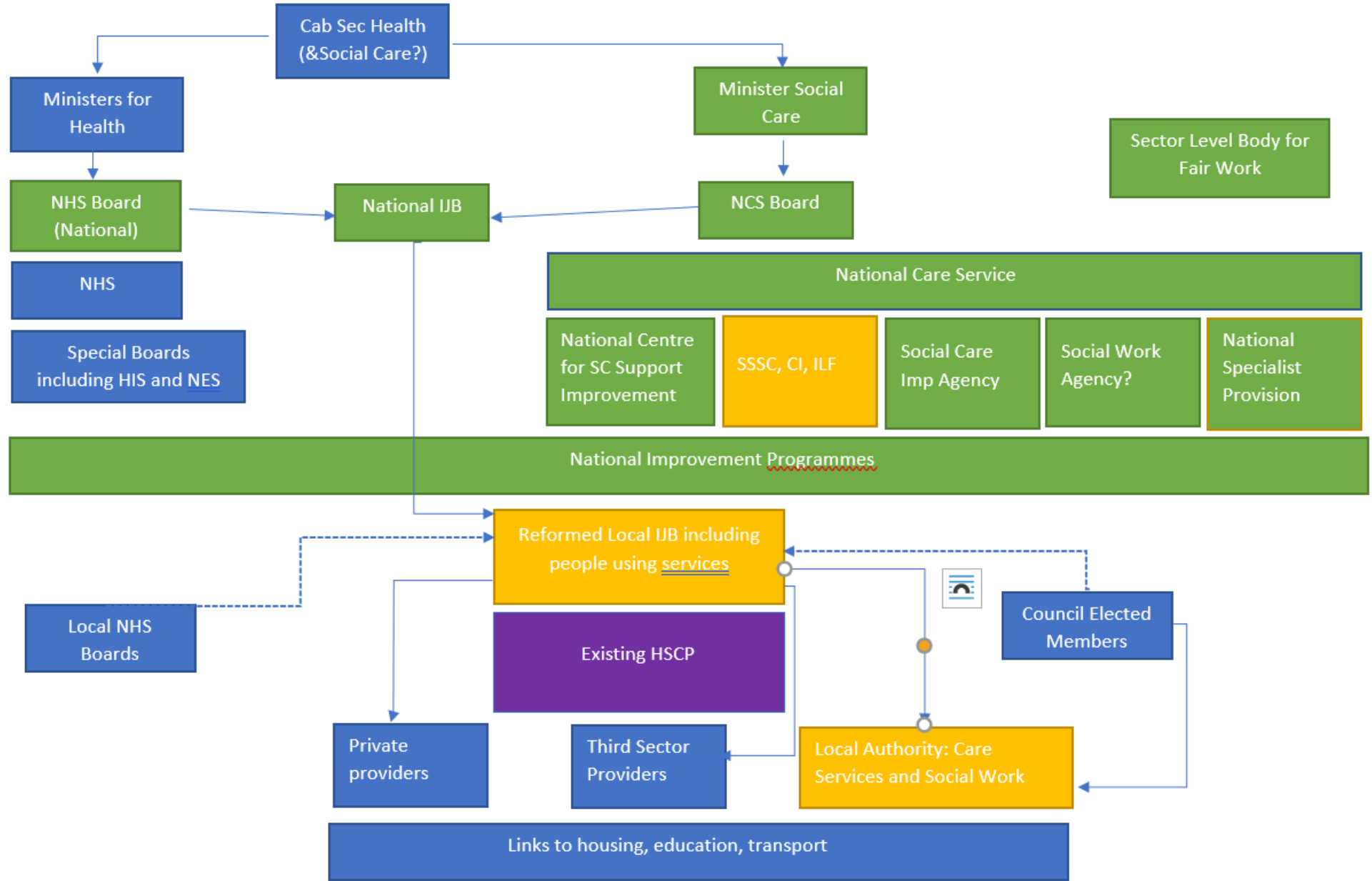
National Care Service Structure

SASW

The professional association for social work and social workers



NCS Structure?



Key questions

- **What could be achieved in the current local structure with additional resource?**
- **Is the number of new bodies/roles necessary to solve the problems identified? (there's a lot of green)**
- **Accountability – does the new structure make it simpler for people using services to achieve their rights and seek redress?**
- **What will the impact on the social work profession be?**

So, Social Work?

- 1968 Act – Duty of Welfare (LAs) and CSWO role
- SW relationship with social care
- SW may become a contracted service
- Risks of fracture of the profession.

Next steps for SASW

Hustings: 22 March

SASW questionnaires?

Future events for members?