

BASW ENGLAND ANNUAL REPORT

YEAR END 30TH SEPTEMBER 2022



BASW England

The professional association for
social work and social workers



Contents

BASW England Chair & Vice Chair's report	3	Workforce wellbeing and direct support to members	19
National Director's report	4	Support Forums, Seminars and Workshops	19
BASW England committee and thematic groups	6	Domestic Abuse Practice Guidance	20
Members of BASW England National Standing Committee 2021/2022	6	Capabilities Statements	20
Thematic Group Chairs 2021/2022	6	Co-Production at the heart of what we do	21
Adult Social Work Group	7	Events	21
Black and Ethnic Minority Professional Symposium	9	Social Work in Disasters	21
Children and Families Group	10	Anti-Racism in Social Work	22
Criminal Justice Group	11	Health and Care Bill	22
Mental Health Group	12	Influencing policy reform and social work practice	23
Professional Development and Capabilities Group	13	Homes not Hospitals	23
Students and Newly Qualified Social Workers Group	14	Keep Caring to 18 Campaign	23
Branches	15	Local Government	24
Birmingham and Solihull	16	Consultations	24
Black Country	16	Celebrating social work	25
Buckinghamshire	16	BASW England in numbers	26
Coventry and Warwickshire	16	Social Media Engagement	27
Derbyshire and Nottinghamshire	17	In the Media	28
Greater Manchester	17	BASW England Financial report	29
Ipswich and Suffolk	17	BASW England Branches and Chairs 2021-2022	30
Kent	17	BASW England staff	31
Lincolnshire	17		
London	17		
Norfolk	18		
North East	18		
Pan Dorset	18		
West Yorkshire	18		
Worcestershire	18		

View the 2022 annual members meeting [here](#)

Front cover photo credit (middle left) ©Social Worker of the Year Awards

We are honoured and privileged to be your representative Chair and Vice Chair for BASW England National Standing Committee. As ever, it has been an incredibly busy year and we want to thank you as members and BASW England staff for all your hard work and ongoing support.

The legacy of the pandemic and the impact of the cost-of-living crisis cannot be understated. Not only is this crisis impacting the people we support; social workers themselves have been telling us about the devastating affect it is having on them too.

BASW England celebrates our profession with pride, we also continue to highlight the challenges faced by the workforce through surveys and using our voice in the media. The fact that **43%** of social workers fear they will struggle to pay their own bills should worry us all. We're proud that campaigns to deliver better funded student bursaries, for car mileage that reflects the increased cost of travel, and reinstatement of homeworking allowances were all launched to help better support the workforce. We will continue to campaign and lobby in 2023 and 2024 and will ensure that the voice of social workers is amplified in all areas including in the media, with policy makers and senior decision makers.

Vava Tampa and Katy Jackson
Chair and Vice Chair
BASW England National Standing
Committee



VAVA TAMPA
CHAIR, BASW ENGLAND COMMITTEE



KATY JACKSON
VICE CHAIR, BASW ENGLAND
COMMITTEE

“Thank you everyone at BASW, for continuing to be such excellent inspirations and tireless role models to those of us in the field.”
(social worker)



MARIS STRATULIS
NATIONAL DIRECTOR,
BASW ENGLAND

BASW England continues to prioritise human rights, a core social work value. We champion co-production, which has resulted in campaigns and resources concerning the rights of autistic adults and adults with learning disabilities. We have developed resources to influence and shape good models of commissioning, human rights and strength-based approaches to social work practice and leadership. This work could not have been achieved without the incredible support of people with lived experience, carers/family members and staff. We will continue to advocate for transparency and a culture of honesty and openness when there are human rights violations, and for people to live at 'Home' not 'Hospital.'

The changing landscape in social care

Reform has been central to both children's and adult's social care this past year. This summer saw the long-awaited arrival of the final report from the Independent Review of Children's Social Care.

BASW England engaged members extensively, highlighting the voice of social work professionals as well as people with lived experience of the care system itself. We launched resources as part of a web hub which shared our key priorities for the review as well as our full response to the final report.

In adult social care, fears of the winter crisis, funding, and issues facing the workforce were the focus of debate. This culminated in the dramatic postponement of the proposed cap to care costs as announced by the Chancellor, Jeremy Hunt in his 2022 Autumn

Statement. BASW England continued their calls and lobbying for more funding as well as a proper plan to support the struggling workforce.

The voice of members

The work of our thematic groups has ensured that BASW remains at the forefront of raising the issues that are most pressing to social workers and their practice. Examples of such vital work are the launch of the supervision template from the Black & Ethnic Minority Professionals Symposium (BPS) and the 'Anti-Racism in Social Work' report.

Policy consultation responses continue to be a key focus for BASW England, with submissions to Social Work England, Parliamentary committees, and work with Government Departments. BASW England were also a key contributor to the Workforce Race Equality Standard (WRES) published by

the Department of Health and Social Care (DHSC). Our Mental Health group also maintain their partnership working with DHSC, which led to development of new Section 117 practice guidance which was published in 2023.

We have actively promoted and developed CPD resources following the launch of *Out of the Shadows: The Role of Social Workers in Disasters* a collection of stories from social workers and survivors who have experienced disasters in England including Grenfell, the Manchester Arena bombing, Hillsborough, the Kegworth plane crash and COVID-19.

During the last year we held over 200 events and/or CPD sessions, including 55 branch events. Our programme offers members huge variety and provides great opportunity to meet social work colleagues from all over England.

Our three-part webinar series '*Living Good Lives*' supported practitioners to enable adults with learning disabilities and/or autistic adults to live good lives along the Homes not Hospitals pathway. We have continued our '*Strengthen Your Human Rights-Based Practice*' adult social work forum, as well as '*Theory to Practice*' workshops for children and families social workers.

We have seen fantastic engagement with the *80-20 Reflective Practice Seminars* and held our *80-20 Conference*, which focused on the continuing work promoting relationship-based practice in social work, as part of BASW's World Social Work Month programme of events. We continue to support member forums and networks at every stage of career, covering numerous areas of practice.

Combating the cost-of-living crisis

Social workers have been bearing the brunt of the cost-of-living crisis just as millions of others have across the country. The voice of BASW England has been in the media, TV and radio highlighting the impact of increased workloads and complexity of cases on social workers' mental health which is being exacerbated by the cost-of-living crisis.

We highlighted findings from a BASW survey which exposed the worrying statistics that around one in ten social workers were accessing food banks with just under half also worrying about how they would be paying their bills going forward. These kinds of findings underpinned three key campaigns to help combat the crisis for social workers. They include a call for the increase of car mileage from 45p to 60p, a fairer and more accessible student bursary and a call for the return of homeworking allowances as seen during the COVID-19 pandemic.

"If I were to give practitioners one piece of advice, it would be this: When you are faced with (a disaster), be a swan, trust yourself. Find your inner core. Take a deep breath, you can and will deal with it." (social worker contributor – '*Out of the Shadows: The role of Social Workers in disasters*' 2022)



Members of BASW England National Standing Committee 2021/2022

Vava Tampa*

Katy Jackson*

Anne Ademugwen

Arif Aslam

Dr Carlene Cornish

Jackie Mahoney

Narges Gauyumi (NQSW rep)

Hannah Rapley

Andrew Reece

Shaminder Uppal

Dominic Watters (Student rep)

* BASW England representative on BASW UK Council

** Resigned/end of office term 2022

Thematic Group Chairs 2021/2022

Adult Mental Health:

Anna Grainger/Mary Brazier (Co-Chairs)
Pauline Sergeant (Vice Chair)

Adult Social Work:

Margaret Young/Jackie Mahoney (Co-Chairs)

Black and Ethnic Minority Professional Symposium:

Pauline Sergeant (Chair)
Cherelle Wilson-Morrison (Vice Chair)

Children and Families:

James Blewett (Chair)
June Thoburn (Vice Chair)

Criminal Justice:

Caroline Bald/Helen Woods (Co-Chairs)

Professional Capabilities and Development:

Louise Purser (Chair)**
Jenni Burton (Vice Chair/Chair June onwards)

Student and Newly Qualified Social Work:

Jade Daniels (Co-Chair)**
Sarah Harrison (Co-Chair)

Adult Social Work Group

The Adult Social Work thematic group was established to promote and support social work with adults. The group has a diverse membership with social workers at different stages in their career, and people with lived experience of social work who regularly attend meetings and act as critical friends.

The group responds to policy and practice issues through the development of practice guidance for social workers, policy positions, submissions to national consultations and through ongoing engagement with BASW members and key stakeholders.

Since 2020, significant reform to social care in England has been announced. The Adult Social Work thematic group continues to work with key stakeholders and partners to strengthen and increase the voice and influence of social work with adults, to lobby and bring pressure on the Government in relation to the impact of the changes proposed through social care reform.

The thematic group produces regular updates for members sharing the latest campaign activity, resources, responses to consultations, legislation and policy, commentary, and media coverage.

A summary of activity undertaken includes:

- Attended CQC briefing sessions
- Ongoing engagement with CQC re Quality Assurance of Local Authorities: written submissions to two online consultations.
- Agreement for ongoing engagement with Adult Social Work thematic group members through stakeholder meetings.
- Agreement for inclusion of BASW England key documents to be referenced in Quality Assurance information for inspectors.
- September 2021 to July 2022: [Inquiry held by the Equality and Human Rights Commission into challenging decisions about adult social care](#) - submission based on existing work undertaken by group members and the ethical approach to meeting needs. Followed by further engagement with social workers in the form of a social work specific survey March 2022.
- February 2022: Integration White Paper - initial [statement](#) published.
- April 2022: Health and Care Levy - [response to consultation](#) on operational guidance submitted.

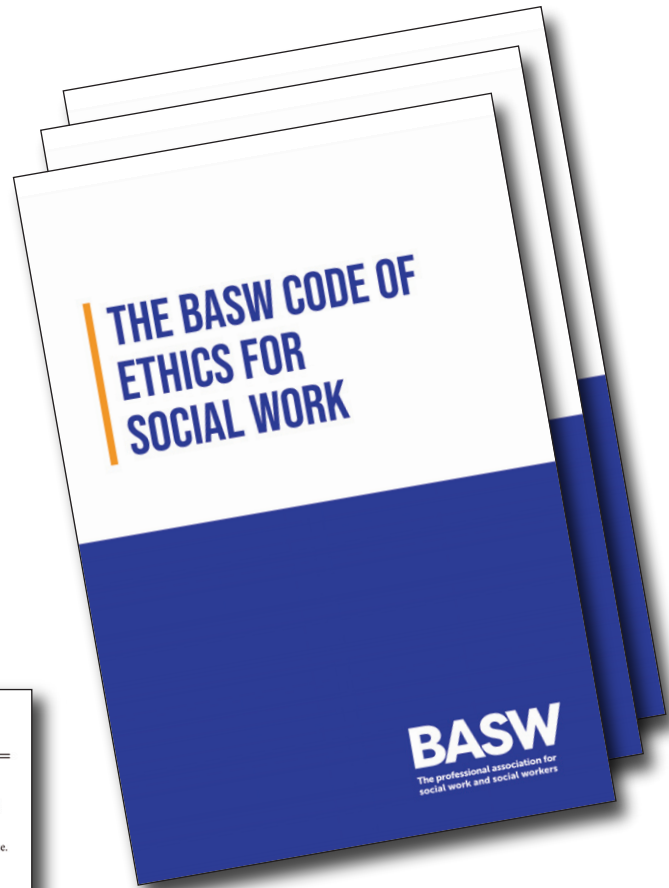
Adult Social Care – How will the upcoming legal changes impact our work

Health and
Care Act
(2022)
Background

The Health and Care Act builds on the proposals for legislative change set out by NHS England in its Long Term Plan.

The Health and Care Bill received Royal Assent 28.4.2022

- May 2022: [Response to The Lords Select Committee Adult Social Care Inquiry - Lifting the veil: Removing the invisibility of adult social care.](#)
- July 2022: [Response to the ADASS Spring Budget Survey 2022.](#)
- July 2022: [Ethical approach to meeting needs - guidance for social workers](#) - how the BASW Code of Ethics can help social workers to improve application of the Care Act to decisions about resource allocation.



PROFESSIONAL SOCIAL WORK MAGAZINE | MARCH 2022

IN FOCUS: REFORM

Integration or a fight for survival?

Last month the government published a white paper on health and care integration in England. Margaret Young, co-chair of BASW's adults social work group, tells **Shahid Naqvi** of the challenges ahead

The health and social care system "remains fragmented and too often fails to deliver joined up services". The goals of its different parts "are not always sufficiently aligned" and people too often "feel like they have to force services to work together".

So say health secretary Sajid Javid and levelling up secretary Michael Gove in a foreword to *Health and Social Care Integration: Joining up care for people, places and populations*, white paper spelling out a vision for change.

Among proposed solutions is having a single person accountable for shared health and social care outcomes locally.

The drive is part of a wider agenda to reform health and social care that includes the Health and Care Bill which will see the creation of Integrated Care Systems.

But will it work? And crucially, will social work's contribution be recognised within the new world order?

Margaret Young, co-chair of BASW's social work with adults' group, believes success – or otherwise – is not just about changing the system. It's as much about professionals understanding each other and their knowledge bases.

"We have been through so many attempts to integrate," she says. "But how well things work tends to be based not just on these big strategic announcements but on how joint services understand each other's cultures."

There is an educational task here, says Margaret, a particular challenge for social work.

"It is difficult because a degree in social work isn't like a degree in language, for example. It is an eclectic mix of social sciences and difficult to pin down, which makes it hard for others to understand."

"If you are bringing teams together you need to give them the space and time to understand all that. What do social workers study? What are they likely to know?"

"Many professionals are not that much further than the general public in understanding social work. There might be a nurse who worked somewhere and saw social workers sorting out certain things and gets it."

'In hospitals, social workers don't have much of a presence... they are drowned out by every other profession'
MARGARET YOUNG




15

Presence in the media:

- March 2022: [Community Care - Councils to consider outsourcing care assessments to manage the impact of the cap on care costs.](#)
- March 2022: [Professional Social Work magazine](#) - Margaret Young Co-Chair, Adult Social Work thematic group article *Integration or a fight for survival?* (p. 15) and John Allen article *More Questions than Answers in Reforms* (p. 30).
- May 2022: [Community Care - Care reforms would require unfeasible boost to social work numbers without system change, says report.](#)
- June 2022: [Community Care - Social worker shortages, sector's biggest concern in delivering cap on care costs.](#)

Black and Ethnic Minority Professional Symposium (BPS)

The Black & Ethnic Minority Professionals Symposium (BPS) is a safe online space for Black and ethnic minority social workers to educate, empower and equip themselves to navigate the various institutional and structural obstacles they face as professionals. The BPS is a necessary opportunity to role-model Black and ethnic minority excellence, professionalism, and unity.



The aims and objectives of the group are to:

- Provide a safe space for Black and ethnic minority social workers to meet.
- A caucus that generates strategies and tactics to influence social work policy, practice, and education.

- To role-model Black and ethnic minority excellence, professionalism, and unity.
- To evaluate existing frameworks and systems within social work to improve the impact they have on Black and ethnic minority social workers.
- To partner with relevant external agencies and organisations to promote Black and ethnic minority empowerment and professional leadership.

The BPS has grown its membership and actively engages with the England Committee and other thematic groups and to deliver a wide programme of engaging webinars. The [BPS webpage](#) is a great place to find resources on

anti-racist practice, celebrating Black History Month, interviews and podcasts. In collaboration with School of Shabs, the BPS also developed a [relational & anti-racist supervision form](#) which is being used widely across the profession.



Children and Families Group

The Children and Families thematic group is made up of BASW England members with a special interest in this area of social work. Members of the group are responsible for leading BASW England's position on children and families social work and assisting in the development of policy, practice, and education.

Priority areas include:

- The Independent Review of Children's Social Care
- Relationship-Based Social Work (80-20 campaign)
- Homelessness and Poverty
- Family Courts
- Adoption and Fostering
- Disabilities

The group developed guidance for [social workers working with families who are homeless or who have housing needs](#), aimed at improving social work practice in the area of homelessness. Published in January 2022, the guidance was developed in partnership with Shelter and Project 17.



A cohesive group of members, working together, have identified member strengths and skills, streamlined processes to deliver on the development of resources, and responses to a busy landscape of reform within children and families' social care. The group also delivered a variety of events throughout the year including:

- *Celebrating 30 Years of the partnership with the Children Act 1989* with guests speakers Sir Andrew McFarlane, Sir James Munby, and Wendy Rose OBE and BASW member Pam Shodeinde who spoke about the development of the Act and how it has been implemented over the past 30 years.
- [Why Care About the Care Review](#) with Professor Brid Featherstone, expert by care experience and author David L Jackson, and senior practitioner, writer, and member of BASW's Black and Ethnic Minority Professional Symposium, Patriche Bentick who spoke about why social workers should become better engaged with the review.



- *Importance of the 'Keep Caring to 18' Campaign* with guest speakers Carolyne Willow from Article 39 and expert by care experience Mohamed Mohamed.
- *Theory to Practice* sessions continued to offer a reflective space for members, with the voices of experts by experience at the centre of learning.

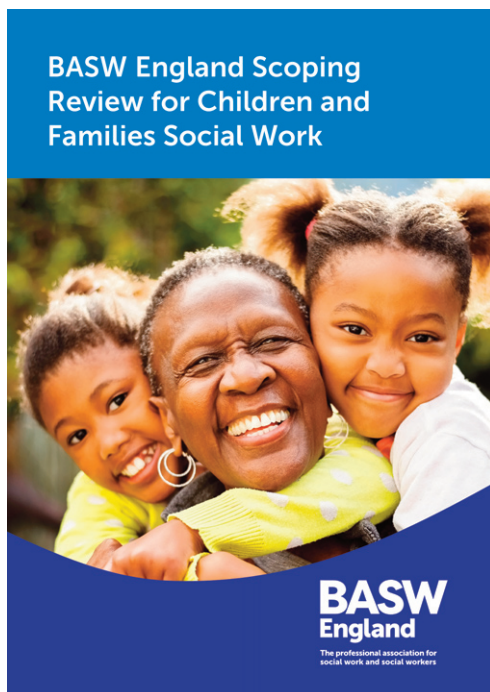
Key BASW England statements/publications:

- October 2021: [BASW England responds](#) to Care Review's latest publication - a summary of feedback received on the Review's *Case for Change* report.
- November 2021: Review of Children's Social Care agrees to Children's Rights Impact Assessment - [BASW England response](#).
- March 2022: Competition and Market's Authority review into children's social care - [BASW England statement](#).
- May 2022: Independent Review of Children's Social Care - [BASW England initial response](#).
- August 2022: Independent Review of Children's Social Care - [BASW England's full response](#).

BASW England regularly informed members as to the potential implications of the review, its scope, and areas of coverage, via branch events, e-bulletins, and media coverage.

The Independent Review of Children's Social Care (IRCSC):

BASW England consulted with members via a range of workshops, surveys, branch activity to gather views to inform campaigning and consultation around the review. This occurred at all stages from interim report through to the final report, published in May 2022.



80-20 Campaign:

As part of World Social Work Day, we hosted our 80-20 Conference: [Inclusive relationship-based practice in a changing world](#). Three sessions took place online throughout the day covering topics including:

- Session 1 - *Social work, the pandemic and relationship-based practice in a changing world*
- Session 2 - *Use and further development of the 'KitBag' tool to assist relationship-based practice with diverse communities*
- Session 3 - *Creating a relationship-based practice culture within organisations.*

Criminal Justice Group

The Criminal Justice thematic group recognises the important interface between social work and the criminal and youth justice systems. The group values the contributions of members from a range of social work backgrounds to influence BASW policies and formulate responses to relevant government consultations and reforms. Members are concerned with a range of issues including: the protection of rights, ethical offender management, working with children and families and the integration of social work interventions in the rehabilitation of offenders. Information on the work of activities and achievements of the group can be viewed via their [webpage](#).

Examples of the work undertaken by the criminal justice thematic group include:

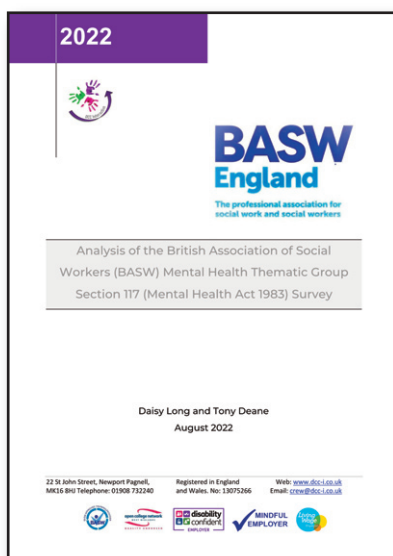
- [The current state of youth justice](#)
- [BASW England Criminal Justice Group & PACT event](#)
- [A discussion with John Crilly: BASW England Criminal Justice Group](#)
- [BASW Criminal Justice Group writes to MPs](#)
- [Criminal Justice Social Work](#) - Let's Talk Social Work podcast



Mental Health Group

The Mental Health thematic group continues to meet online quarterly. The group has a strong membership with representation from social workers in a wide variety of roles including academics, experts by experience as well as regular attendance by Department of Health and Social Care (DHSC) mental health social work lead.

The group established two task and finish groups to facilitate work outside of the quarterly meetings. The first group focused on understanding the current landscape of provision of Section 117 aftercare and developing Section 117 guidance. The group has met on several occasions and has undertaken a Freedom of Information request resulting in the collation of a significant repository of current policies, procedures and tools used by local authorities and NHS Trusts. The group undertook a survey of members to gain a better understanding of how Section 117 is used and understood by the social work workforce. A report based on the findings of this survey was published in September 2022: [Analysis of the British Association of Social Workers \(BASW\) Mental Health Thematic Group Section 117 \(Mental Health Act 1983\) Survey](#).



The work of this group has informed the Section 117 practice guidance developed by the DHSC and was published in Spring 2023.

The second task and finish group focused on raising the profile of mental health practice and issues, identifying, and sharing good practice and resources. Members of the group have submitted articles to *PSW* magazine highlighting issues such as the mental wellbeing of social workers. The group recorded [Should I Stay, or Should I Go? - Let's Talk Social Work](#) podcast which focused on the integration journey for community mental health teams.

The group wished to understand if the [Guidance on the support of mental health social workers in the NHS.pdf \(hee.nhs.uk\)](#) had led to representation of social work leaders on the boards of NHS Mental Health Trusts or in senior leadership positions in those organisations and more widely if people with lived experience were represented on those boards. A Freedom of Information request was submitted to 53 trusts with 33 responses.

The group has worked with BASW UK colleagues to provide a response to the call for evidence to the draft [Mental Health Bill](#). Members of the group also provided feedback to the DHSC in relation to legislative changes to the Mental Health Act, specifically relating to Guardianship.

The group submitted a response to the DHSC's call for evidence on the [Mental Health and Wellbeing plan](#). In responding to this call for evidence the group undertook an online survey of members and hosted an online workshop. Members of the group are working in partnership with members of the Adult Social Work thematic group in relation to the current LPS consultation.

Professional Development and Capabilities Group

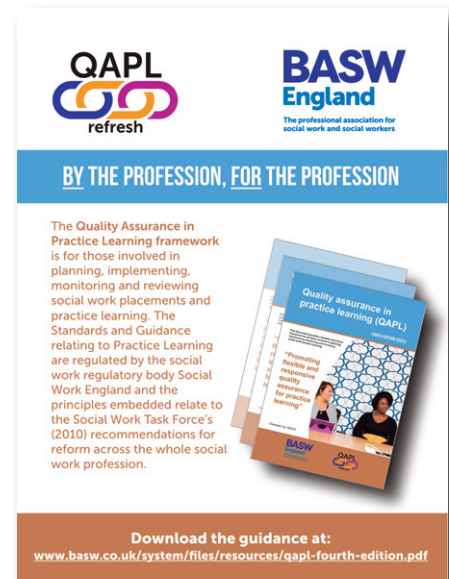
The Professional Capabilities and Development thematic group consists of experienced practitioners involved in social work education. The group members form eclectic representation for practice educators, people with lived experience, universities, teaching partnerships, local authorities, and members of partnering social work organisations. The central aim of the group is to ensure that those entering the social work profession have cohesive, quality assured standards to guide their practice, which reflect social work values and the principles of equality, diversity, and inclusion.

The Professional Capabilities and Development thematic group continues to work in partnership with others to develop and review social work practice education. Earlier work carried out by the group includes the refresh of the [Professional Capabilities Framework \(PCF\)](#), which continues to provide a central compass for the assessment of social work practice education, integrated within a developmental career framework. This year the group has carried out an in-depth review of the [Practice Educator Professional Standards \(PEPS\)](#) and has refreshed the [Quality Assurance for Practice](#)

[Learning \(QAPL\)](#) guidance. The group supports and advocates for the practice educator role to be fully appreciated and supported within their teams and across the wider social work profession.

Recent work includes collaboration with the National Organisation for Practice Teachers (NOPT) to compile guidance aiming to improve access to support, resources, and recognition for all practice educators, including those that have independent status.

The group continues to collaborate with others across the profession to strengthen the quality frameworks needed to ensure that newly qualified practitioners entering the profession, and those with established social work tenure, have cohesive, up to date standards and guidance to support them. The group fully endorses the importance of ensuring that new developments in social work education are created by the profession and in the best interests of the profession.

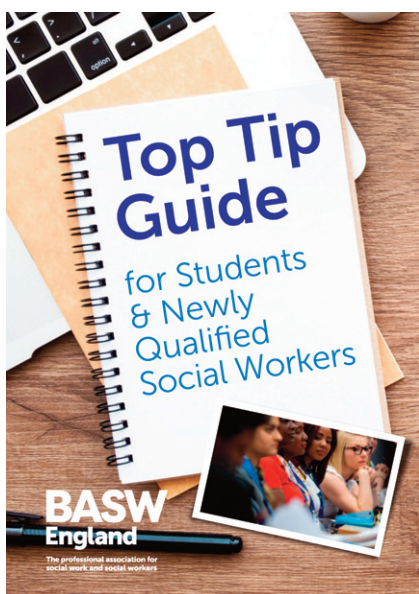


The Professional Capabilities Framework (PCF)

The PCF is the profession-owned, overarching framework of social work education and professional development in England

Students and Newly Qualified Social Workers Group (NQSWS's)

The [Top Tip Guide for Student Social Workers](#) (first developed in 2021), was updated and continues to be promoted to students via universities across the country. It was very well received by lecturers and students alike and introduced students to BASW at a critical stage in their social work career.



Developed by and for students and NQSWs, the guidance contains top tips, resources, student reflections, research soundbites, links to upcoming events, the PCF and BASW Code of Ethics, as well as information on how students can complement the learning they receive on placement and at university.

Strengthening Membership Experience

After a 2-year break from in-person events, the BASW England team had the opportunity to engage with members and non-members at a variety of in-person events. March 2022, we saw the return of Compass Jobs Fair in Birmingham. It was great to meet so many social workers in various stages of their career, including many students. BASW members visited our stand, encouraging their colleagues to join BASW. Our members are a great advocate for BASW and for the profession in general.



COMPASS JOBS FAIR

We continued to visit universities throughout the year, to promote the benefits of BASW membership and to highlight the many ways BASW can support students throughout their career path.

"Thank you for the presentation this afternoon. I really enjoyed it. I will therefore love to join BASW as a student social worker."
(student social worker)

Local branches and networks

Local branches and networks give you the opportunity to get involved with BASW at a local level. Check where your nearest branch and network is to attend events and courses local to you, and pursue your career interests.



Branches continue to offer a safe space for social workers to explore issues which have an impact on their practice and wellbeing and access the mutual support from other branch members. A range of models are in use with many branches inviting external speakers to present, whilst others are holding regular book clubs to promote reflective discussions, and some are harnessing the knowledge within their branch to host discussions. Anti-poverty campaigning has become a key focus of many branches, with some branches supporting their local networks by developing guides to inform members of various resources available in their local communities and to assist those experiencing financial difficulties. Events focused on a wide range of issues impacting on some of the most excluded people within society ranging from homelessness, drug and alcohol use and migration.

In addition to branch committee meetings, 55 events were held which attracted over 800 attendees. Branch events are free to members and non-members and can be a social worker's first engagement with BASW. Branch chairs promote the benefits of membership during branch events. Branches continue to be a strong conduit to feed member views into the wider organisation on an ongoing basis with branch chairs meeting monthly. The 2022 BASW UK AGM had eight motions proposed, 50% of which were from BASW England branches.

The role of Equality, Diversity, and Inclusion (EDI) champions within branches continues to be developed and promoted, and now has direct links with the BASW EDI special interest group. Champions volunteer to undertake the role of supporting their local branch to ingrain inclusion and anti-discrimination in all branch activities and actively challenge racism and other forms of discrimination. Many branches still have vacancies for EDI champions, for those who might be interested in getting involved with their local branch.

"BASW officers are daily reminders to me, of how very proud I am to be a social worker, and what my role is all about." (social worker and member)

Branches continue to welcome new members with many branches actively seeking people who can dedicate some of their time to develop and promote new activities and events. The time commitment varies and is flexible, ranging from a couple of hours a month to an hour or two every three months. Further information about branches can be found at [Local branches and networks \(basw.co.uk\)](https://www.basw.co.uk/local-branches-and-networks) and you can contact the England team england@basw.co.uk if you would like to get involved.



Birmingham and Solihull

With the impact of the COVID-19 pandemic on members personal and professional commitments, the branch met when we could throughout 2021-2022. However, when the branch did meet there were constructive and supportive discussions related to the personal and professional effects of working through the pandemic.

Black Country

Celebrating 50 years, the Black Country Branch remains a very active branch, continuing to hold a diverse range of seminars such as:

- The Kindertransport and social work with today's child refugees
- Delivering for a Better Future – supporting autistic people and people with learning disabilities, Understanding Moral Injury, and its impact in social work
- Working with men across the life course with Professor Brid Featherstone
- Drugs and Alcohol: Signs, symptoms, and support – Current challenges faced by social workers
- "You'll make a good social worker, but you think too much" – What works when trying to implement evidence in Adult Social Care
- Social work with people who experience homelessness or have housing needs: Developing policy and guidance for a key area of social and personal life across the generations

The branch prides itself in attracting a wide audience of social workers, and wider social care sector workers. These diverse voices and experience, enrich the discussion and amplifies the voice of social work. The branch has maintained their commitment to social work issues and keeps discussion alive in respect of important topics, for example by submitting motions to the UK AGMs and holding events in respect of people with learning disabilities and autistic people, housing and homelessness.

Buckinghamshire

The Buckinghamshire branch held three events throughout the year welcoming new members to develop the work of the branch and provide a safe space for social workers to meet to discuss issues that are important to them. There continues to be opportunities to influence the voice of BASW in the region.

Coventry and Warwickshire

The Coventry and Warwickshire branch works in partnership with Coventry University who provide vital support and facilities. Between October 2021 and September 2022 the branch continued to meet regularly to plan events of interest for local practitioners. The branch continues to work to increase members participation and to provide a safe space and CPD opportunities for those who attend. Events have covered a wide range of topics including an event with speakers from the Lincolnshire Trust which focussed on veterans' mental health and the various barriers and issues they face. The branch also hosted an event with guest speaker David L. Jackson, who is care experienced and Author. David spoke about entering care as a baby alongside members of the 'Your Life, Your Story' community who shared their moving experiences and talked about their book '*The Gift of Experience*' and artwork from their group 'Artifact.' The branch hosted a joint virtual event with the West Yorkshire branch on Food Poverty with a variety of speakers, exploring how foodbanks operate, who uses them and the issues they deal with daily. In addition the branch proposed a motion at the BASW UK AGM on the reviews of children's social care and adult social care, and seconded a motion by the North East branch on the role of Chief Social Workers and proposed an amendment to a motion from the Black Country branch on the entitlements of special interest groups.

Derbyshire and Nottinghamshire

After the inevitable disruption caused by the COVID-19 pandemic, the branch returned to normal activity levels in October 2021. The committee is fortunate to have gained new members including a student representative from the University of Derby.

The committee met regularly during this period to plan a series of seminars (some in-person and some online). They have hosted high profile and interesting speakers covering topics such as neurodiversity and social work, attachment theory and trauma, and a seminar looking at the support for disabled children and young people with severe complex needs, with reference to NICE guidelines. All events have been very well supported and colleagues reported that they value the focus on practice and research at the seminars.

The branch is grateful for the continued support from the University of Derby who welcome them to hold BASW events there and invite us to speak to students about the importance of belonging to a professional association. Plans are in place to hold some events at Nottingham Trent University and the branch looks forward to a similarly supportive relationship with NTU.

Greater Manchester

The Greater Manchester branch continued to host their events online and during this period, they hosted three events with guest speakers from a wide range of organisations. A presentation by The REIGN Collective entitled *Power not Pity* explored best practice for working with people with lived experience of abuse and the best ways to work collaboratively with experts by experience. It was well attended and received positive feedback from attendees. An event featuring the Lucy Faithfull Foundation provided an overview of harmful sexual behaviour and technology assisted harmful sexual behaviour in children and young people. The branch continues to invite new members to join the committee and welcomes members who live in areas bordering Greater Manchester.

Ipswich and Suffolk

The Ipswich and Suffolk branch held one event during this period which focussed on the future growth and development of the branch. The branch is hoping to increase their activities and campaigning in 2023.

Kent

The Kent branch held three events and has refreshed the committee membership, following an event to attract new members. The branch hosted an event on the mental health of social workers and students which explored how social workers can balance their role with self-care, why it is important, what tools we can use, and how this helps the people we work with. Another event covered the topic of meeting the CPD requirements of Social Work England and obtaining professional support via BASW. Events continue to be well attended and offer peer support and networking opportunities for local members.

Lincolnshire

During the last year, the previous Chair stepped down, and the branch met twice. The branch held a re-launch event in March with members forming a task and finish group to support future branch activity and a partnership with the University of Lincoln was established. An in-person event was held at the university in September with guest speaker Erin Lawler, which was successful in attracting existing and new members to enthusiastically work together in taking the branch forward. The priority for 2023 will be to appoint a new Chair.

London

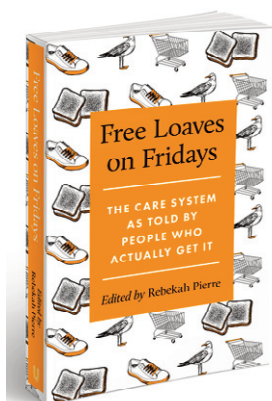
In April, the London branch jointly hosted an event with charity Refugees at Home, in response to the unprecedented number of people applying to host refugees in their home. Since every host needs a home visit from a volunteer professional with experience in home assessment and safeguarding the event was an opportunity to explain the requirements and attract new volunteers to undertake these home assessments. The branch continued to welcome new members, further strengthen the committee, and planned to appoint a new Chair.

Norfolk

Ratified as a new branch in April 2022, the Norfolk branch had a busy year with monthly reading groups and bi-monthly branch events. Themes for the reading group have included; *Relationship-Based Practice and Social Workers with Learning Differences*. There is a padlet with suggested reading that members can contribute to which has led to interesting and reflective conversations with social workers from around the country and different practice backgrounds sharing their ideas and views.

Branch meetings have focused on different themes, with a presentation followed by a discussion before moving on to branch updates and themes for future meetings. In May the branch held a meeting to look at “*What can Norfolk do in the Ukraine crisis?*” with opportunity to talk about what services are available locally and nationally, what adults and children arriving in the UK might need from services, and what the local response has been so far. In September we welcomed Dr Cynthia Okpokiri who presented on the theme of *Social Work and Parenting While Black* based on her research in this area.

North East



The North East branch held three events, which included an annual members meeting, media representation of social work and to support the forthcoming book [Free Loaves on Fridays: The Care System As Told By People Who Actually Get It](#). The branch also hosted a discussion on members hopes and aspirations for the future of social work.

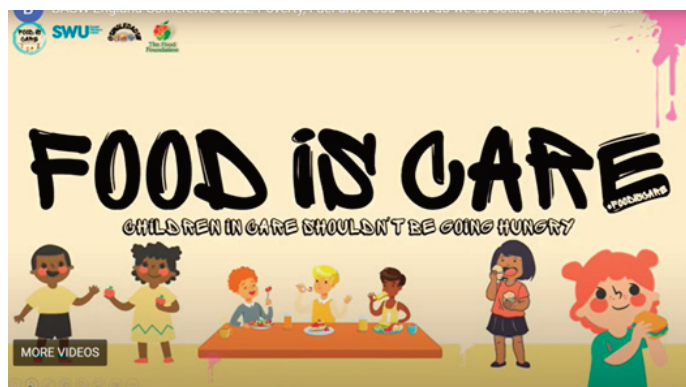
Pan Dorset

The Pan Dorset branch has held one event during this period, aimed at attracting new members to the committee. The branch is considering options to jointly deliver some events with members from neighbouring areas and continues to seek new members who can actively support with branch activities.

“Thank you so much for your presentations. They were engaging, informative and challenging.”
(Branch event attendee)

West Yorkshire

The West Yorkshire branch held three events, including a session dedicated to anti-racist practice which engaged members in critical reflection with two of the authors of the *Anti-Racist Social Worker*. The branch also hosted a joint online event focussing on food poverty with the Coventry and Warwickshire branch highlighting the challenges for people, families and communities in the two areas of the country. BASW member Dominic Watters spoke at a very powerful and moving event which engaged local charities and supported the [Food Is Care](#) campaign. All events have attracted existing and new members to the branch which continues to grow.



Worcestershire

The Worcestershire branch held seven events, which included a presentation and discussion on the Independent Review of Children’s Social Care, an overview of the many specialist groups and support services now available through BASW, a focus on the work of Multi-Agency Risk Assessment Conferences (MARAC), the reforms in adult social care, perinatal mental health social work, a branch ‘*End of Summer Afternoon Get Together*’ and a presentation from Social Work England on their priorities and plans for social work regulation.

Support Forums, Seminars and Workshops

BASW England Professional Officers continued to support BASW members with a series of **57** support forums, seminars, and workshops, including adult social work workshops on strengthening human rights-based practice, children and families' social work forums with a focus on strengthening relationship-based practice and theory to practice workshops looking at evidence-informed practice with the voices of experts by experience at the heart of learning.

The *Theory to Practice* workshops covered a variety of children and families social work topics including; *Relationships During Pandemics* (World AIDS Day special event), *Contextual Safeguarding*, *Parental Substance Abuse*, *Storytelling Through Graphic Novels*, *Better Recording and Lifestyle Work and Improving Family Time for Children in Care*. Alongside these events, the mentoring support forums continued to offer advice and support for NQSW members who were looking for their first job in social work or those members who were looking for a change in their career.

"I continue to look forward to attending the workshops when possible and I feel that the workshops have become an essential tool for peer support and to enhance my practice. Well done to all."
(social worker)

"I got the job today. I'm so excited, I can't thank you enough. Thank you for your support."
(mentee – newly qualified social worker)

Emergency Duty Team Manager Forums

The Emergency Duty Team group exists to address the unique challenges faced by emergency duty teams across England, and to work together to campaign for improved working conditions, training opportunities, and best practice. The group meets monthly and provides a safe online space for EDT managers to off-load and facilitate peer support. The group produced a webinar entitled [Emergency Duty Teams: The Forgotten Service?](#)

Mentoring

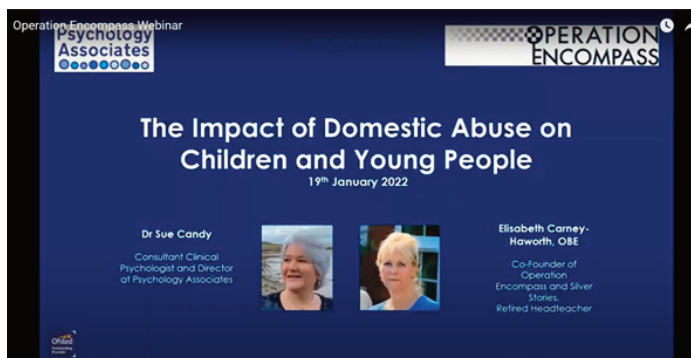
The BASW England [mentoring service](#) has seen an increase in the number of applicants looking to access the 1:1 service. It continues to benefit from a committed network of mentors available to provide 1:1 support to individuals; they offer a breadth of experience covering all areas of social work and the service has implemented a new system for matching mentors with mentees to maximise best outcomes for all involved and improve response timescales. Mentors have a peer support forum and welcome guest speakers who can assist them in developing their skills as mentors. For example, a representative from the BASW UK EDI Special Interest Group, attended and the group explored issues specific to supporting Diaspora Social Workers who have become one of the largest groups accessing the service.

Mentoring forums for NQSWs and social workers seeking employment have continued to be delivered online, offering an open forum for members to seek guidance on applying for social work roles and providing signposting into the 1:1 element of the service, alongside other BASW services.

Domestic Abuse Practice Guidance

Between July to September 2022, BASW England ran training sessions with three local authorities based on our [Domestic Abuse Practice Guidance](#). This pilot scheme was the first step in developing bespoke online training modules with an intersectional approach to domestic abuse as outlined in the guidance. We asked those who participated in the sessions to complete a short feedback form regarding the training's effectiveness and delivery: **95%** of participants responded positively to the sessions, highlighting how interactive the session was, the skills of the facilitator, and the use of different learning styles and visual aids.

Participants were asked to rate their knowledge, skill, and confidence in handling Domestic Abuse cases on a scale of 1-5 before and after taking the training. **95%** of survey participants noted a skill increase in at least one area, and **82%** noted an increase in all three.



In October 2021, as part of the domestic abuse series of workshops, BASW England hosted *Supporting Black and Minoritised Survivors of Domestic Abuse* in partnership with Southall Black Sisters, a charity working to support black and minoritised communities, to provide bespoke CPD training on how best social workers can meet the needs of deaf victim-survivors in cases of domestic abuse. In January, an event was held entitled [Operation Encompass](#), an exploration of the damage caused to children where there is domestic abuse in the home.

"I was expecting domestic abuse training, but it covered so much more" (course attendee)

Capabilities Statements

BASW England ran a series of workshops with seven local authorities supporting early implementers by providing information about embedding the BASW capabilities statements and implementation resources for [social work with people with learning disabilities](#) and [social work with autistic adults](#). A variety of tools and resources have been co-produced with experts by experience, and the pilot scheme supported local authorities in rolling out the use of the capabilities statements within their teams. Resources included an [organisational self-assessment](#) tool and the opportunity to explore ideas about how the resources could be used to support best practice.

An early implementers group, which includes people with lived experience, was established to provide a space for organisations who are engaged with using the capabilities statements and toolkit resources. The group meet 4 times a year to share learning and ideas and to capture outcomes and impact.

"It was an excellent session and a special thank you for adapting the session to suit my needs as well."
(social worker)

BASW England attended key events to promote the capabilities statements and resources including: *The Improving Healthcare Outcomes for People with Learning Disabilities Conference* which took place January 2022 with a presentation on *The BASW Capabilities Statements: working with the social care sector to provide better outcomes for people with a learning disability*. In March 2022 we hosted a workshop and discussion session on *Introducing the BASW Capabilities Statements and Toolkit Resources* at the Inside Government – Adult Social Care Forum National Event. Following these and other events, ten local authorities and one teaching partnership committed to embedding the capabilities statements and resources in their social work practice.

Events

BASW England hosted a variety of events with stakeholder partners and experts by experience. In November, a three-part series of webinars were delivered in partnership with NICE, CQC and Skills for Care. Entitled [Living Good Lives](#), these webinars aimed at supporting social care practitioners to enable adults with learning disabilities and/or autistic adults to live good lives along the homes not hospitals pathway. The webinars were recorded to be used as a CPD resource.

Living good lives webinar series: supporting adults with learning disabilities and/or autistic adults

This free webinar series aims to support health and social care practitioners to enable adults with learning disabilities and/or autistic adults to live good lives along the homes not hospitals pathway.

Living good lives: Supporting adults with learning disabilities and/or autistic adults in communities through commissioning
For commissioners and those involved in commissioning or strategy including principal social workers
Mon 1 Nov 12:30 to 14:00

Living good lives: Creating a positive and therapeutic culture in hospitals with a rights-based approach for adults with learning disabilities and/or autistic adults
For health and social care practitioners in hospital settings
Mon 8 Nov 12:30 to 14:00

Living good lives: Effective hospital discharge planning for adults with learning disabilities and/or autistic adults to prevent future admissions
For social care providers and social workers supporting hospital discharge
Mon 15 Nov 12:30 to 14:00

Register at: www.basw.co.uk/events

BASW England **Care Quality Commission** **skillsforcare** **NICE**

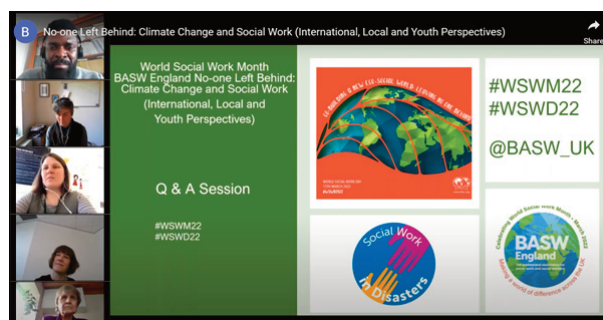
Social Work in Disasters



In May 2022, [Out of the Shadows, The Role of Social Workers in Disasters](#) was published and a book launch event was attended by contributors. Edited by BASW England and Dr Angie Bartoli, Nottingham Trent University, the book is an anthology of stories from social workers with experience of working in disasters along with the

voices of survivors. The book is a great learning tool for those who have an interest in working in disasters. We heard powerful testimony from people who shared their experience of living through disasters such as Grenfell, Manchester Arena, Hillsborough and the Kegworth air crash.

As part of World Social Work Day, we hosted an event with a focus on climate change: [No-One Left Behind – Climate Change and Social Work](#). Acknowledging the impact of climate change as an environmental disaster and the challenges for social work, the session looked at the local, national, and international perspectives, with guest speakers Zoe Cohen, from Extinction Rebellion, Professor Lena Dominelli from University of Stirling and BASW England Committee Chair, Vava Tampa.



In partnership with the Open University and University of Stirling, BASW England commissioned a pilot scheme to test the [online CPD resources](#) developed to support social workers working in disasters. We continue to support the Social Work's Place in Emergencies and Disasters (SPEDI) special interest group and plan a launch event of the CPD resources and a Social Work in Disasters Conference in 2023.

Social work in disasters training
Continual professional development (CPD)

- Module 1**: Introduction to Social Work in Disasters
- Module 2**: Law, Policy and Best Practice
- Module 3**: Person-centred and research-informed practice within a multi-agency context
- Module 4**: Responding, using theory and self-care

"I feel proud to be associated with the book and will be promoting it with colleagues. The launch was a moving and emotional event and I have reflected on how liberating it was to be able to speak about what we as social workers do. It made me think that there are so many aspects of our work that we could and should speak about and write about." (social worker contributor)

CO-PRODUCTION AT THE HEART OF WHAT WE DO

Anti-Racism in Social Work

BASW England continues to promote anti-racist practice in social work and presented **23** sessions to local authorities. We also presented to the Royal College of Occupational Therapists, IFSW Conference 2021 and Government Forum events. During [Black History Month](#), BASW member and Vice Chair of the Student and NQSW thematic group Pam Shodeinde, in conversation with BASW England explored the importance of anti-racism in social work and specific areas of anti-Black racism, the Black Lives Matter movement and allyship. In November BASW England published its [Anti-Racism in Social Work Activities Report](#).

A report on the
'Anti-racism in Social Work'
activities across the UK
(between 27/05/20-26/09/21)



The BPS continue to produce anti-racism resources and events and in June 2022, BPS members Patriche Bentick, Pamela Shodeinde and BPS chair, Pauline Sergeant spoke on the Let's Talk Social Work podcast [Why is Anti-Racism Still Crucial to Social Work Practice?](#) Paying particular focus to children's services and mental health social work, this episode explored the issues social workers need to take into consideration to ensure they are challenging inequality and promoting anti-racist practice when working with Black children and young people and supporting Black vulnerable adults. The episode also explored unconscious and overt bias faced by Black practitioners and examines over-

representation at fitness to practice hearings as an example of how structural racism discriminates against Black social workers.

BASW England also had the opportunity to [interview Clive Lewis MP](#) about social work, anti-racism and the impact of austerity and neoliberalism on society and more.

Antisemitism continues to be a growing problem in British society, and to commemorate *Holocaust Memorial Day*, Dr Paul Shuttleworth wrote a moving reflection piece on the rise of antisemitism entitled [Antisemitism is still here, it's on the rise, and it's up to all of us to fight it](#).

"I would like to take this opportunity to thank you so much for bringing anti-racism into the spotlight on social work. More importantly I have finally found the confidence to return to my beloved profession."
(social worker)

Health and Care Bill

Members across the Association were consulted and engaged as part of BASW England's work feeding into the Health and Care Bill's journey through Parliament due to the implications the proposals had for the social work profession.

Briefings were drafted to members to keep them informed about the proposals and uploaded to the BASW website alongside a statement from the Adult Social Work thematic group who helped to draft and lead on BASW's response to the proposed legislation.

Once the consultation on the White Paper had concluded BASW England continued to

engage with members regarding the final Bill. BASW England worked with the BASW UK parliamentary lead officer to brief and lobby Members of Parliament as well as the Lords during the committee and the report stage of the Bill's journey through Parliament. (The Health and Care Bill was passed into law as the Health and Care Act 2022).

Homes not Hospitals



The purpose of the [Homes not Hospitals](#) workstream is to look at ways to work in partnership with service providers, local authorities, the NHS, people with lived experience, families and carers with a view to influence policy and practice reform, with a human rights-based focus and promoting models of best practice within local authorities, the NHS and across the sector.

The Homes not Hospitals campaign group and members of the roundtable group have held regular meetings as part of informing and progressing campaign activity. The campaign has been quick to respond to emerging news items relating to the detainment and seclusion of people with autism or learning disabilities in assessment and treatment units (ATUs) or restrictive care arrangements.

In 2022 we met regularly with the DHSC to input into the [Building the Right Support for People with a learning disability and autistic people](#) action plan. Attended by BASW members and relevant stakeholders, these meetings were an opportunity for the Homes not Hospitals campaign group to raise key points for consideration in the action plan. In July, the group also met with Gillian Keegan MP, Minister of the Department of Health and Social Care, to discuss key priorities.

Members have also informed the work that went into a campaign pack that will be launched in 2023 to engage and influence elected politicians on the issues that the

campaign is raising awareness around and advocating on. The campaign pack includes quotes from people with lived experience and sets out why action is needed from Government to ensure people can live independent lives in their local communities that is appropriate to their care needs.

A series of presentations and workshops have been delivered to teams within local authorities to introduce the campaign activity and key resources to support and strengthen social work practice and promote best practice commissioning.

Keep Caring to 18 Campaign

BASW England has continued its support of the *Keep Caring to 18 Campaign* and has worked closely with the team at [Article 39](#) as well as campaigners across other organisations. The campaign seeks to see Government ban the use of semi-independent settings for under 16s to be extended to cover all young people including those aged 16 and 17. A member event was hosted entitled 'The Importance of the 'Keep Caring up to 18 Campaign?'' with Carolyne Willow (Article 39), and Mohamed Mohamed (expert by care experience) promoting the aims of the campaign and encouraging members to get engaged in the consultations around this.



BASW England also joined fellow campaigners to deliver a petition to 10 Downing Street which had received over 10,000 signatures in support. BASW also made its position clear in relation to the need for 16 and 17 year olds to receive care where they live at every stage of the care review consultations during this period and raised concerns regarding the [DFE consultation on regulating 'supported accommodation' for 16 and 17 year olds](#).

Local Government

BASW England continues to engage with local government, meeting with directors of adults and children's and families to discuss the current landscape of social work and the challenges faced by local authorities and frontline social workers. In May 2022 we launched our [Local Elections 2022: BASW England Manifesto for Social Work](#) calling on representatives from all parties to pledge their support for social workers and the children, adults and families who use their services. The manifesto outlines six key issues that we continue to campaign on:

- Equality and social justice at the heart of everything we do
- Support social workers and prioritise their wellbeing
- Public recognition of social work
- Time for social work - and putting people with lived experience at the heart of decision-making
- Tackle the causes of social work crisis intervention
- Any COVID-19 inquiry ensures previous mistakes are avoided.



Consultations

BASW England continues to respond to an ever-increasing number of consultations. BASW England and SWU jointly responded in May 2022 on [Social Work England's rules and regulations consultation](#) and in September 2022, to [Social Work England's readiness for professional practice consultation](#). Following surveys to BASW members, the results were analysed and shaped the outcome of the response.

Responding to and engaging with policy consultations, whether they come from Government, sector bodies or policy think tanks, is a critical part of BASW England's activity to ensure the voice of members and social work is heard loud and clear.

Engagement in the policy landscape not only raises awareness of key issues pertaining to social work, but it also gives us an opportunity to influence policy and shape the landscape for the profession.

Not only does this work ensure BASW England's voice is heard, but it also provides a valuable opportunity for our members to shape our policy positions and to explore new opportunities that arise from this work, be that presenting in member events or representing BASW in the media.



BASW England continued to sponsor the *Social Worker of the Year Awards*, and the 2021 awards were once again held virtually due to COVID-19. [Twelve of the finalists](#) were BASW England members.

For *World Social Work Day* we hosted four webinars including the *80-20 Conference* and the *Climate Change and Social Work* webinar and attended and supported external



events including University of Coventry in partnership with Your Life Your Story and BASW England entitled *Unleashing the Power of Relationships & the Untold Story from members of the care experienced and care giving community*. The Student and NQSW thematic group also hosted an event to celebrate social work *Co-building a New Eco-Social World*. We also had many requests from organisations to send resources to help social work teams celebrate their own World Social Work Day events.

We once again hosted our Annual Members Meeting, Student & NQSW Conference and England Conference over three days and online. These member-led events, focussed on the challenges we face in the current climate and identified ways for us to find recovery, hope and pride in our social work practice. At the annual members meeting Andy Burnham, Mayor of Greater Manchester spoke of the Hillsborough Law campaign and the support from BASW England in relation to the work of social work in disasters.



[The Choir with No Name](#), a choir made up of people who have experienced homelessness, performed with a song for the pandemic entitled *Together but Apart*. The Student and NQSW thematic group led the student conference with key themes of [Taking Online Learning to Work](#) and [An Exploration of Different Student Social Worker Placement Opportunities](#). These sessions discussed the lived experiences of students, newly qualified social workers and placement supervisors/coordinators during the COVID-19 pandemic through their spoken histories and a rare opportunity to hear from a diverse range of organisations offering placements across the sector. This session was developed by and for social work students who really understand the joys and challenges of the placement process.

The theme of the BASW England conference 2022 recognised the impact on social work of working with people affected by socio economic deprivation, social and health inequalities in a context of increased demand and diminishing resources.

Session 1: [Poverty, Fuel and Food- How do we as social workers respond?](#) was a panel discussion exploring the impact of austerity and poverty and the action to be taken by the profession and by BASW. The voices and key messages from lived experience informed this session with the opportunity to hear from the audience with Q&A following a short presentation from each panel member. *Session 2: [Ethics, Principles and Moral Injury](#)* considered ethics and contemporary social work and the mobilisation of hope. The session discussed how social work practice requires the use of self, how social workers support others without suffering moral injury and to understand the impact of the working environment on social work practice. The range of speakers drew on their own areas of expertise to consider the challenges for the profession from a lived and learnt experience perspective.

October 2021 to September 2022 we delivered:

over 200 events



55 branch events



57 support forums,
workshops, and seminars



28 anti-racism
presentations to local
authorities



18 webinars



20 university visits



17 thematic group
events



10 recruitment events



6 World Social Work
Day events



1 Book launch



Over 3,500 attendees



Webpage views:

448,186 views of BASW England specific resources
233,681 resource downloads

E-bulletins

The BASW England e-bulletin continues to be the best source of information for BASW members, including news items, surveys, government policy reforms, Social Work England updates and upcoming events.

Social Media Engagement

Twitter top performing posts:

Content	Impressions
Practice Educator Professional Standards	19,180
Black & Ethnic Minority Professionals Symposium	2,848
BASW England response to Independent Review of Children's Social Care	7,700

Facebook:

Content	Type	Reach
BASW England speaks to the Guardian	News Article	2,300
BASW England event on the Review of Children's Social Care	Event Promotion	19,600
BASW England congratulates finalists for Social Worker of the Year Awards	News Article	4,300
BASW England response to BBC News findings that 100 people held more than 20 years in institutions	News Article	3,200
BASW England encourages social workers to respond to call for views from Review of Children's Social Care	News Article	11,100
Response to £4 billion black hole in Children's Social Care in England	News Article	7,300
Social Workers warn of rise in mental health problems among children – The Guardian	News Article	4,100
Call for more support to retain practice educators – Community Care	News Article	8,900
BASW England cautiously welcomes proposed readiness for practice guidance - Community Care	News Article	6,200

In the media

BASW England members continue to represent the voices of social work in the media through articles, radio, and TV interviews. Ensuring a balanced response to key news items relating to social work is important to raise the profile of social work and to continue to represent the important role that social workers play in our society, and as part of an integrated health and social care system.

Recent appearances in the media include ITV News, BBC Radio 4, Channel 4 News, along with articles in national newspapers including the Guardian, The Telegraph, The Times and The Independent and Community Care.



Highlights:

- January** 13 news items reached **167,656** people
- March/April** 26 news items reached **495,560** people
- May/June** 11 news items including response to national reviews into child deaths and the Independent Review of Children's Social Care reached **340,225** people

BASW England in the Media in Numbers

BASW England featured in **252** individual news pieces*
Approx figures collated from media monitors

82% were online

18% were in print

64% national news

20% regional news

12% specialist i.e., blogs

*Advertising value equivalent: £590,963

SUMMARY OF INCOME AND EXPENDITURE IN ENGLAND FOR THE YEAR ENDING 30/09/22

The following information has been extracted from the
BASW Audited Annual Accounts for the UK

INCOME	2021/22
	£
Membership	3977316
Events/Conferences	6792
	0
TOTAL INCOME	3984108
EXPENDITURE	
England Committee	
Meeting & Chairs Expenses	3809
Strategic Development, Conferences & AGM	6656
External Events	943
Sponsorship of SW Awards	18021
Member Involvement	3730
Office	
Running Costs	4736
Non-recurring expenditure	
Fixed Asset Spend	0
Central Costs - per Capita	
Indemnity Insurance	85645
PSW (Net)	165256
Cost of Staff based in England	
Actual Payroll & Expenses	506332
TOTAL	795128

These figures exclude England's share of central costs ie, Chief Executive, Membership, Finance, Publications, A&R Services etc and England's share of profits from book sales and other centrally managed activities.

BASW's finances in England are contained within the overall resources available to the Association and are the subject of comprehensive statutory audit arrangements and presentation to the UK AGM each year.

BASW England Branches and Chairs 2021-2022

Birmingham and Solihull	vacant
Black Country	Tonia Dubidat
Buckinghamshire	Elizabeth Njenga
Coventry and Warwickshire	Diana Harris
Derbyshire and Nottinghamshire	Janet Foulds
Devon and Cornwall	Lucky Kaur
Greater Manchester	Carolyn Deacon
Ipswich and Suffolk	Victoria Veale
Kent	Joanne Liveston
Lincolnshire	Trisha Hill
London	vacant
Norfolk	Anna Wright
North East	vacant
North Yorkshire	Hiede Coates
Pan Dorset	Catherine Rundle
Staffordshire	vacant
West Yorkshire	Jack Skinner
Worcestershire	Ros Gowers

BASW England Networks (pre-ratification)

South Yorkshire	vacant
------------------------	--------

Sincere thanks to Phil Smith and Andy Merkey (Birmingham and Solihull), Julia Winkless (Ipswich and Suffolk), Esme Daley (London) and Christian Kerr (North East) for all their hard work, leadership, and invaluable expertise as they step down as branch Chairs. Thanks also to Greta Hoffman and Sam Clayton (North Yorkshire network) for all the time and energy they have put into establishing the network, which has now been ratified as a branch. We welcome new branch Chairs Victoria Veale, Trisha Hill and Hiede Coates and wish them well in the coming year.

To get involved in your local branch contact england@basw.co.uk for more information.

BASW England Staff

Maris Stratulis	National Director
Liz Howard	Professional Officer
Denise Monks	Professional Officer
Rebekah Pierre	Professional Officer
Wayne Reid	Professional Officer
Joshua Dixon	Policy and Campaigns Officer
Lisa Kennedy	Events, Administration & Business Manager
Beth Cole	Administration, Events & Content Coordinator
Sheridan Lane	Administration, Events & Content Coordinator

The BASW England team wishes to thank Louise Sims, who left her post of Professional Officer, for her work with the Children and Families thematic group, the 80-20 Campaign and organisation of the World Social Work Day Conference. Denise Monks formerly part-time has been appointed as a full-time, permanent member of the team.



SWU Social Workers Union

Great reasons why BASW members should join the Social Workers Union for an extra £25!

BASW is not a Trade Union - under section 10 of the Employment Relations Act 1999 a worker has the right to be accompanied by a SWU Trade Union Official. Members of BASW without union membership do not have this right.



SWU Social Workers Union
Austerity Action Group



SWU Social Workers Union
Union Contacts



SWU Social Workers Union
Campaign Fund



Talk to SWU Social Workers Union
workplace issues webinar

Become a Union Contact

SWU recruits and trains workplace Union Contacts who promote membership and activism in workplaces, universities, and beyond. Becoming a SWU Union Contact not only enables you to encourage membership, but also provides opportunities to become further involved in YOUR union. Many Union Contacts are involved in devising and promoting campaigns; attending demonstrations and rallies; taking part in research; writing articles for our Newsletter; and even joining our Executive Committee.

Be part of the GFTU

SWU is a member of the General Federation of Trade Unions (GFTU), providing our members with access to GFTU training, support, campaigning and union activism. GFTU is a group of 30 specialist unions with a combined membership of over 300,000.

Write an Article for the Newsletter

SWU has its own Newsletter which is emailed to members every month. We welcome contributions from SWU members on topics relevant to social work, trade unionism and activism.

Be Active!

SWU offers opportunities for members to join events, activities, campaigns, research, and 'Talk to SWU' sessions covering social work issues and advice.

Together with BASW

SWU works with the British Association of Social Workers (BASW) to protect social work professionals - speaking as social workers, for social workers. Having a professional association and trade union together is important for the social work profession. We aim to be the best trade union for social workers.

Devise and Develop a Campaign

SWU's Campaign Fund is available for SWU members to set campaign priorities and engage in activism through developing and promoting a campaign. We are currently accepting campaign applications from SWU members, and successful campaigners will receive support from SWU and Campaign Collective.

Austerity Action Group

SWU's Austerity Action Group works alongside people with lived experience to enable collective voices to be heard. The AAG campaigns for change, makes parliamentary as well as grassroots links, and is active in attending marches and demonstrations. The AAG welcomes social workers, students, and experts with lived experience.

Opportunities for Students

As well as campaigning and activism opportunities, SWU's annual University Assignment Competition provides social work students with a chance of winning one of four awards of £500.

Additional Benefits

SWU offers additional legal and insurance benefits, as well as CPD opportunities delivered and discounted by Prof Neil Thompson.

Executive Committee and Research Groups

SWU members are eligible to apply to sit upon SWU's National Executive Committee, as well as being part of interesting research groups - recently this has included a focus on supervision and working conditions with the aim of improvements for social workers.



Cite as: BASW (2023) *BASW England Annual Report – Year end 30th September 2022*.
Birmingham: BASW

© BASW 2023

You are welcome to quote from this report so long as the source is correctly cited as above.
Unattributed quotes are forbidden under copyright protection.

British Association of Social Workers
Wellesley House
37 Waterloo Street
Birmingham B2 5PP

BASW England

The professional association for
social work and social workers

www.basw.co.uk